

EQUIP. TYPE *R-390A/UPR* EXP. NO.

~~COL 590-0042-002~~

NOTICE: WHEN GOVERNMENT DRAWINGS, SPECIFICATIONS, OR OTHER DATA ARE USED FOR ANY PURPOSE OTHER THAN IN CONNECTION WITH A DEFINITELY RELATED GOVERNMENT PROCUREMENT OPERATION, THE UNITED STATES GOVERNMENT THEREBY INCURS NO RESPONSIBILITY FOR ANY OBLIGATION WHATSOEVER; AND THE FACT THAT THE GOVERNMENT MAY HAVE FORMULATED, FURNISHED, OR IN ANY WAY SUPPLIED THE SAID DRAWINGS, SPECIFICATIONS, OR OTHER DATA IS NOT TO BE REGARDED BY REPLICATOR OR OTHERWISE AS IN ANY MANNER LICENSING THE HOLDER OR ANY OTHER PERSON OR ORGANIZATION, OR CONVEYING ANY RIGHTS OR PERMISSION TO MANUFACTURE, USE, OR SELL ANY PATENTED INVENTION THAT MAY IN ANY WAY BE RELATED THERETO.

THIS DOCUMENT HAS BEEN PURCHASED BY THE GOVERNMENT AND MAY BE REPRODUCED AND USED IN CONNECTION WITH ANY GOVERNMENT PROCUREMENT OR MAINTENANCE OPERATION.

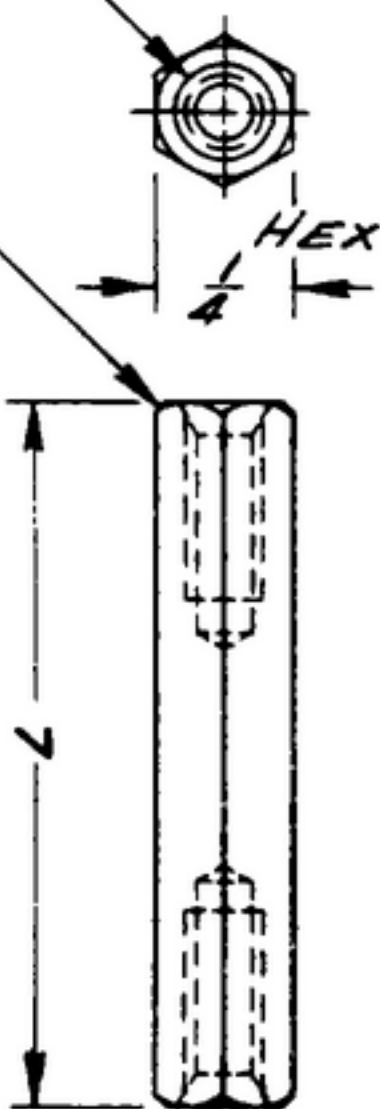
\* FOR INFORMATION ONLY, CONTRACTOR MAY AT HIS OPTION DEVIATE FROM THESE PROCESS DETAILS.

~~\* SWE APPROVAL~~  
~~SYM PR10042-6~~

REVISIONS			
SYM	DESCRIPTION	DATE	APPROVAL
A1	A1 WAS A COMMERCIAL FINISH	15 OCT 59	4142B-PC 59-AI-SI REV'D PME

6-32NC-2B CSINK 60°  
TO 1/16" DIA 3/8" FULL  
THD MIN EACH END

CHAMFER  
CORNERS  
1/32" X 45°



COLLINS PART NO.	DASH NO.	L
558-0042-002	SM-B-248822-1	0.625
558-0043-002	-2	1.750

NOTES:  
1. ALL SCREW THREADS PER BUREAU OF STANDARDS HANDBOOK H-28.

BRASS, COMP. 22, TEMPER 1/2H, PER SPEC QQ-B-626.

(A1) FINISH M262A PER MIL-F-14072

COLLINS PART NO.	ITEM	REQD	PART NO.	DESCRIPTION	MATL	MATL SPEC
LIST OF MATERIAL						
COLLINS PART NO. <del>558-0042-002</del> <del>558-0043-002</del>						

DRAWN <i>R C HILL</i>				CHECKED <i>Blm</i>		APPROVED		-COLLINS-RADIO-CO.- -CEDAR-RAPIDS, IOWA- <i>14216-PH-51-93</i>		DEPARTMENT OF THE ARMY SIGNAL CORPS ENGINEERING LABORATORIES FORT MONMOUTH NEW JERSEY  <i>SM-B-248822</i>		
UNLESS OTHERWISE SPECIFIED: DECIMAL DIMENSIONS INCLUDING HOLE SIZES MAY VARY ±.005 FRACTIONAL DIMENSIONS INCLUDING HOLE SIZES MAY VARY ±1/64 MACHINED ANGLES MAY VARY ±1° SHEARED ANGLES MAY VARY ±.25° BROKEN ANGLES MAY VARY ±1° ECCENTRICITY BETWEEN ANY DIAMETERS ON THE SAME CENTERLINE SHALL NOT EXCEED .010 TOTAL INDICATOR READING. ALL DIMENSIONS ARE FINISH DIMENSIONS INCLUDING APPLIED FINISH AND ARE GIVEN IN INCHES.								SIGNAL CORPS				<i>POST-TAPPED</i>
558-0340004-1 SM-D-248821 SCOL-248775				REVIEWED <i>PME</i>		APPROVED <i>HLV</i> <i>PME</i>		DATE <i>1 DEC 55</i>				
-COLLINS NO. QTY NEXT ASSY USED ON				APPLICATION								